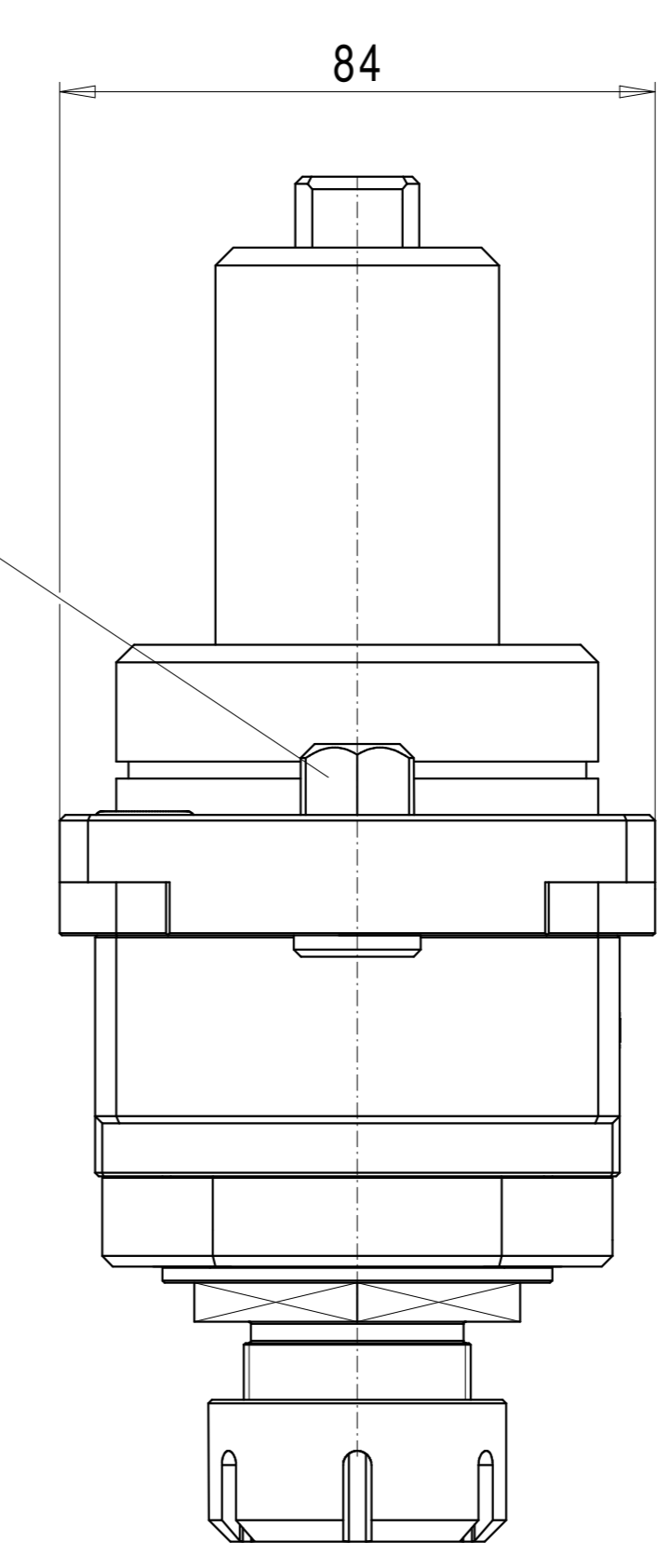
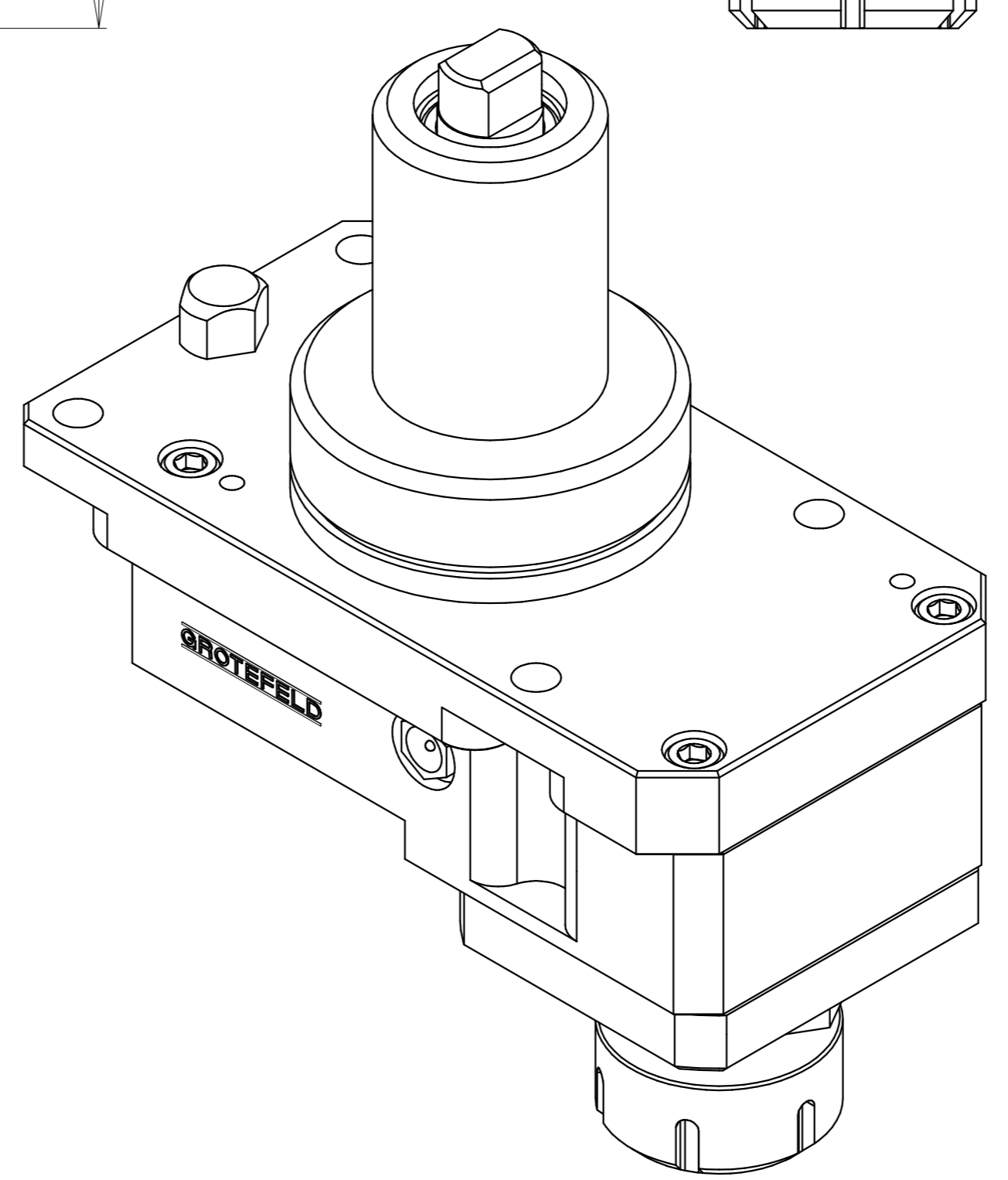
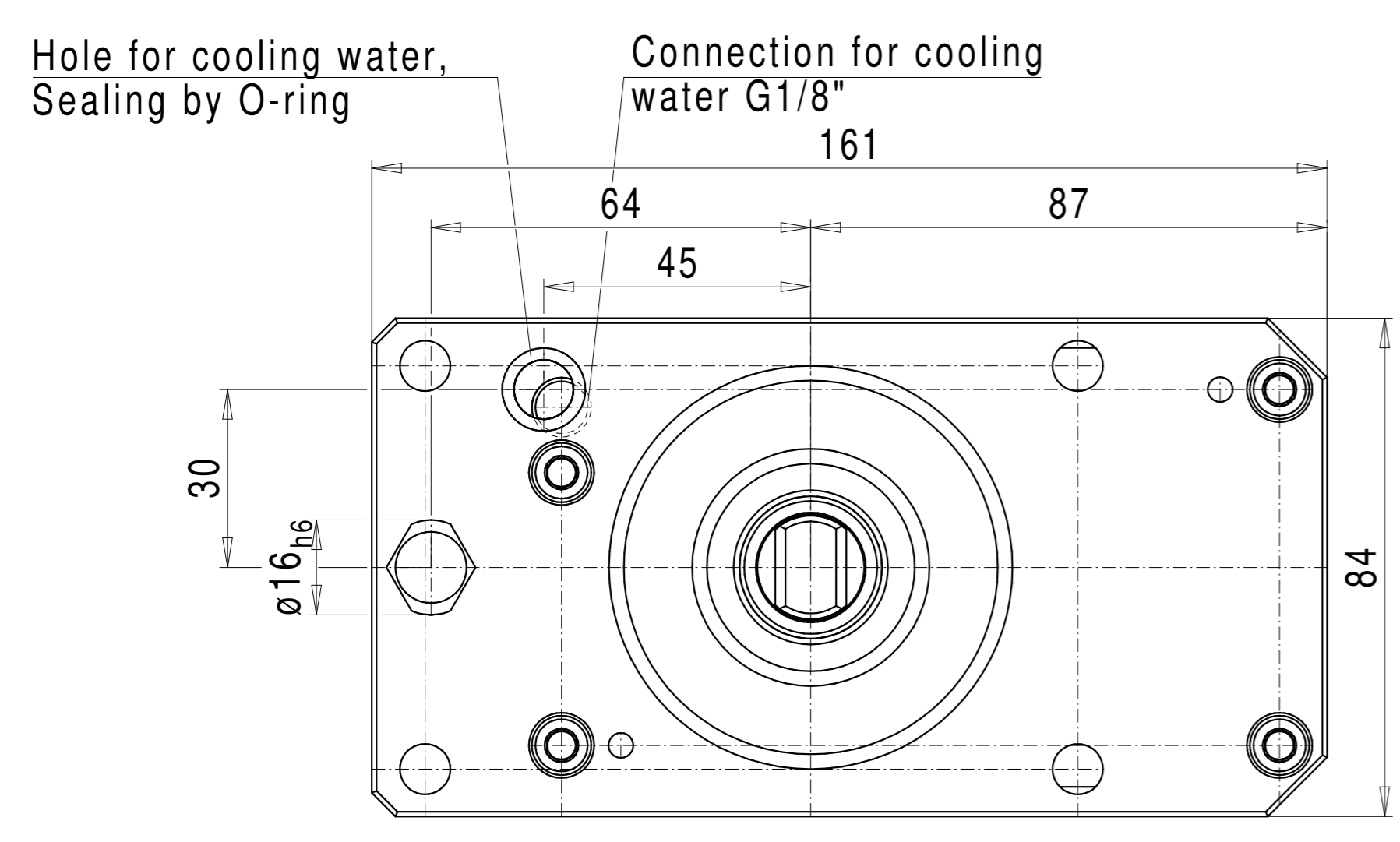
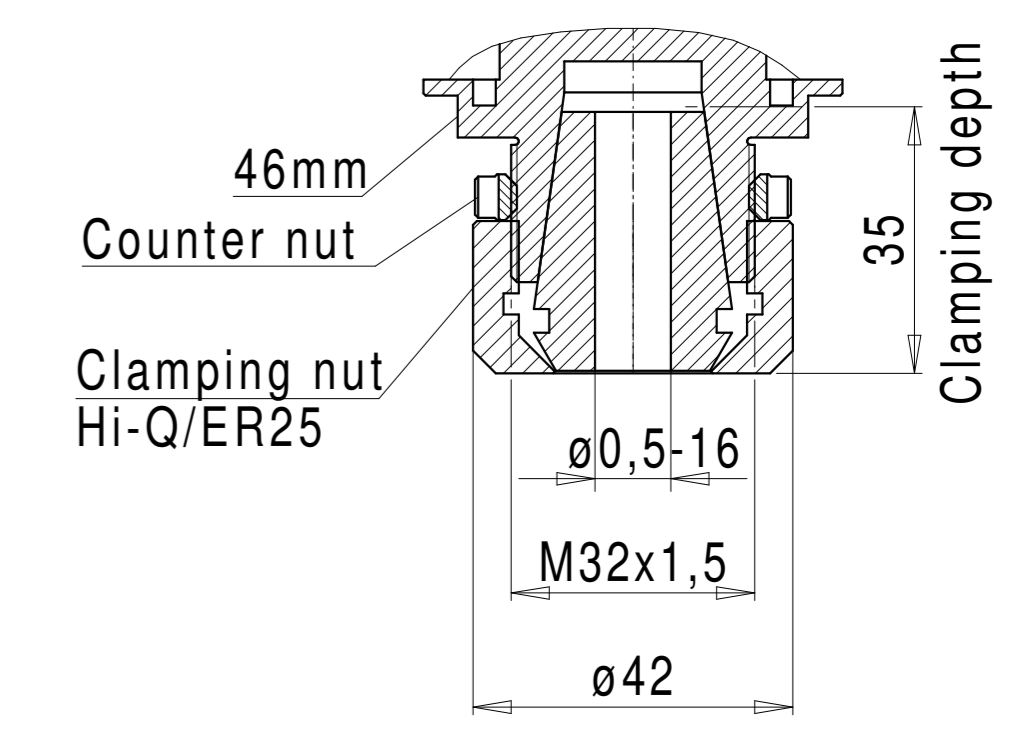


Torque support



Detail X
Collet chuck holder Hi-Q/ER25



Technical data:

Drive direction: R. H. / L. H.

Gear ratio: $i=1:1.15$ - wheel drive

Continuous operation
max. drive speed: 6.000 1/min
max. spindle speed: 6.900 1/min

Drive power: max. 3,0kW

Tool holders: Hi-Q/ER25

Direction of rotation of the tool holder:
against the direction of rotation of the drive

Weight: approx. 5,4kg