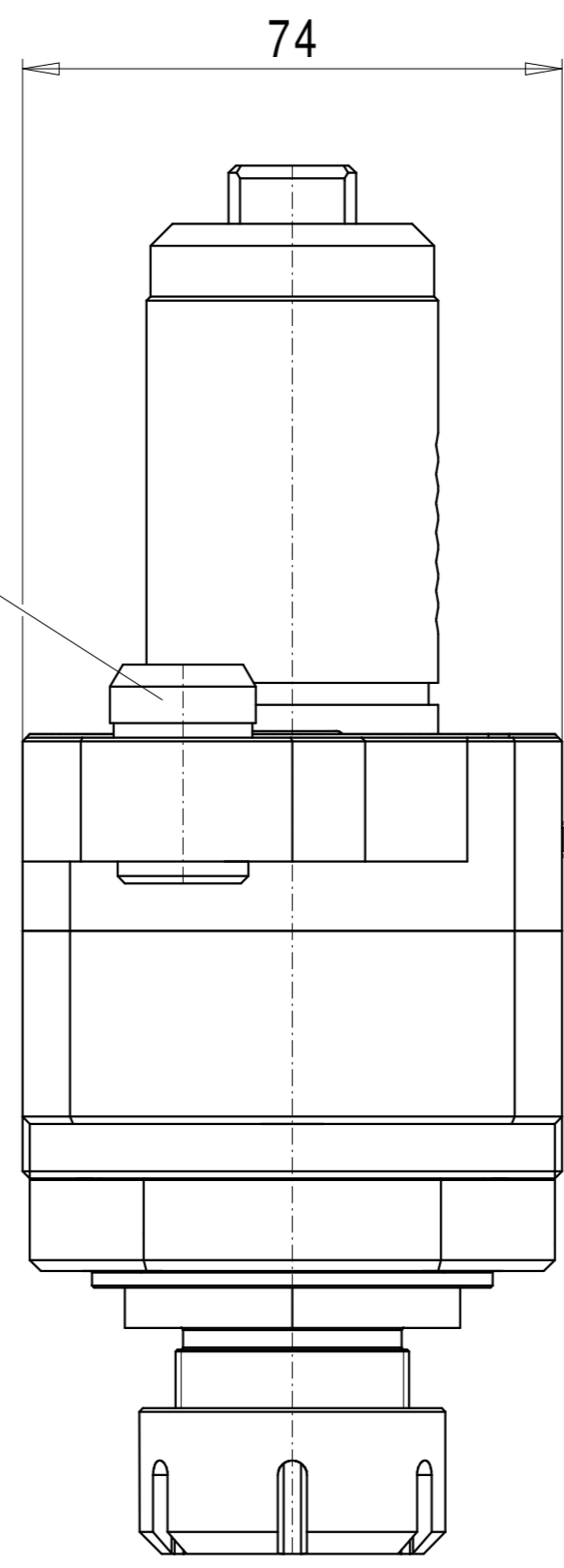
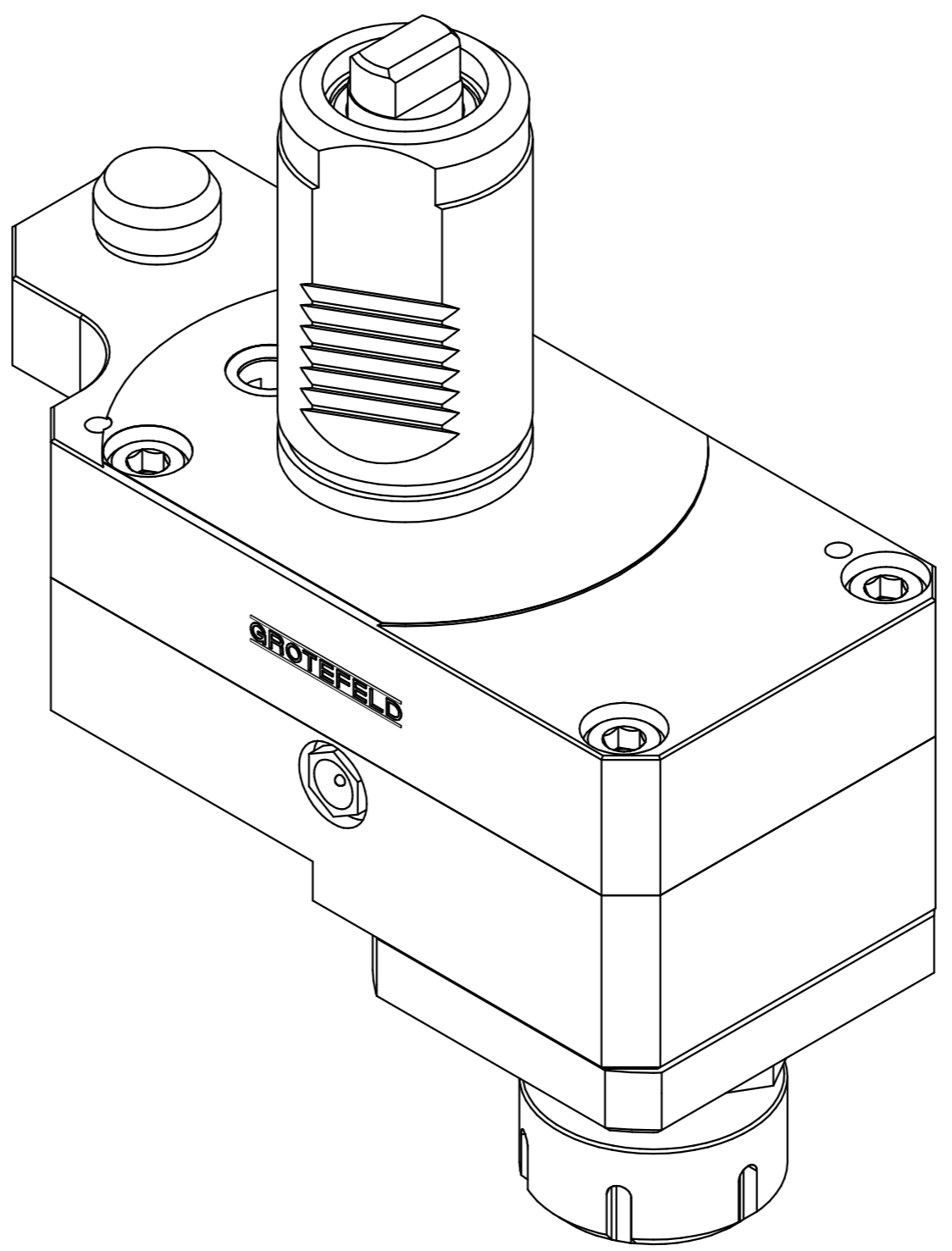
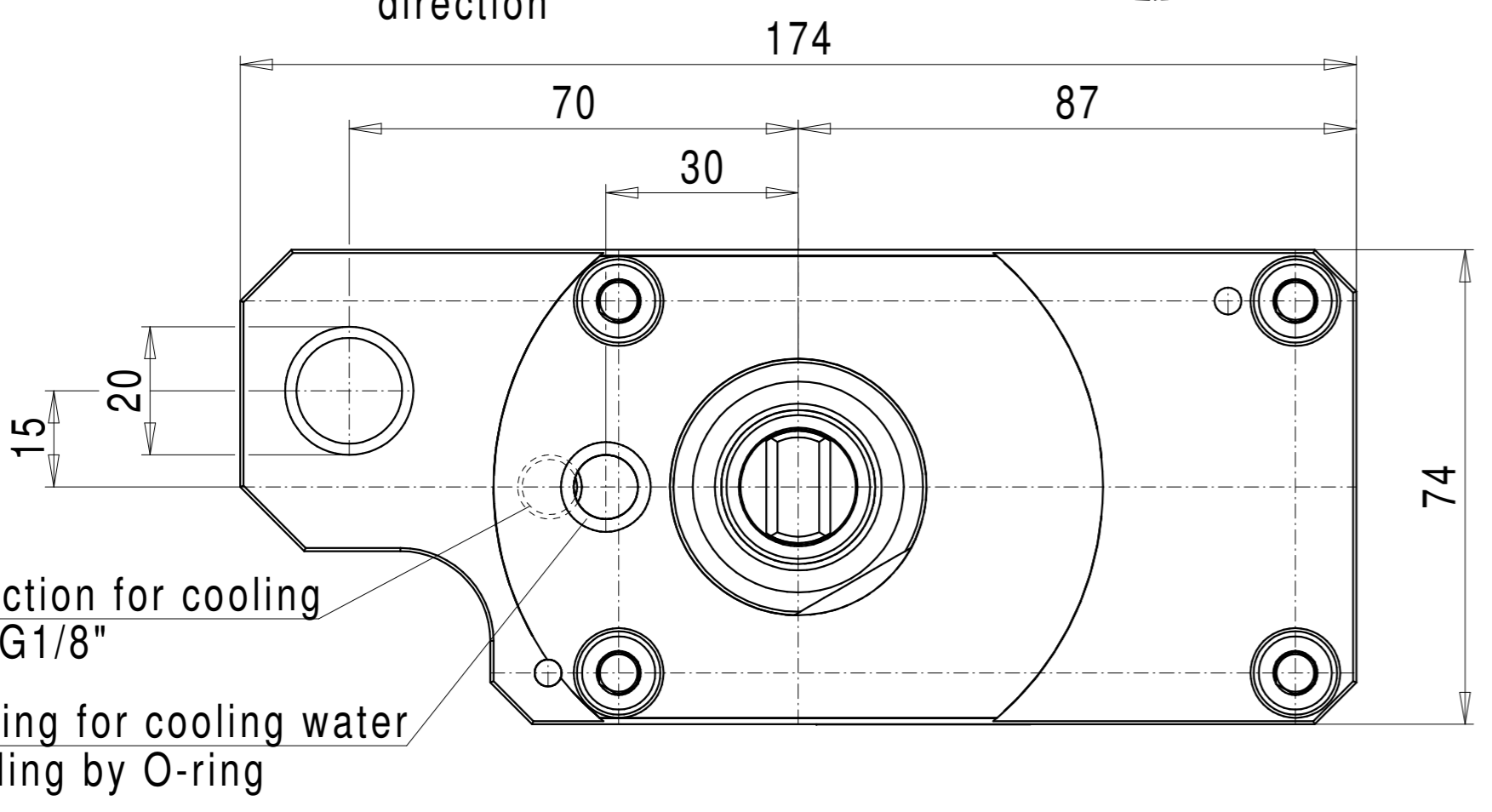
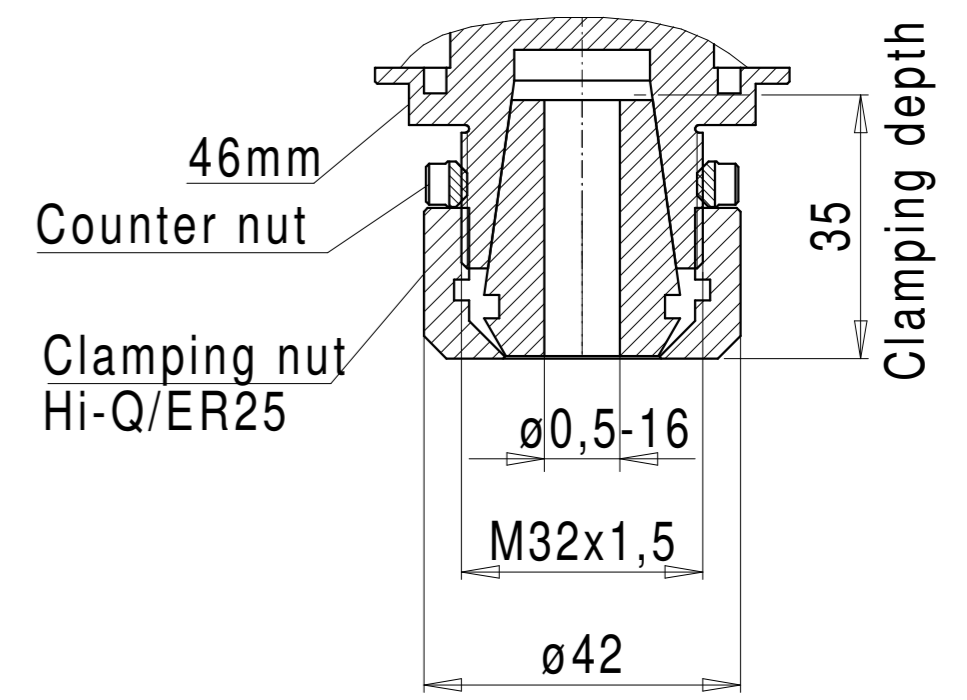


Torque support



Detail X  
Collet chuck holder Hi-Q/ER25



Technical data:

Drive direction: R. H. / L. H.

Gear ratio:  $i=1:1.15$  - wheel drive

Continuous operation  
max. drive speed: 6.000 1/min  
max. spindle speed: 6.900 1/min

Drive power: max. 3,0kW

Tool holders: Hi-Q/ER25

Direction of rotation of the tool holder:  
against the direction of rotation of the drive

Weight: approx. 5,5kg