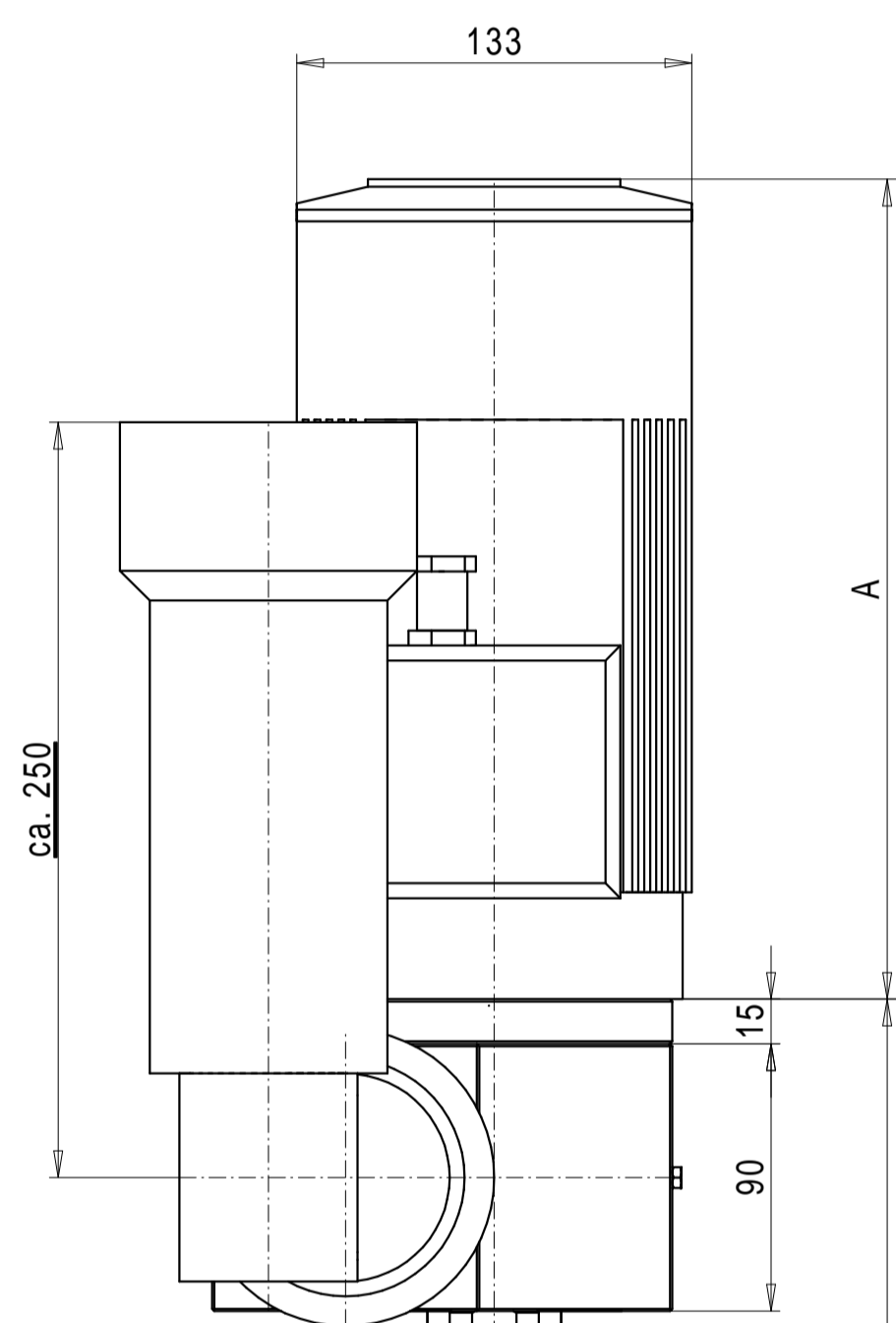
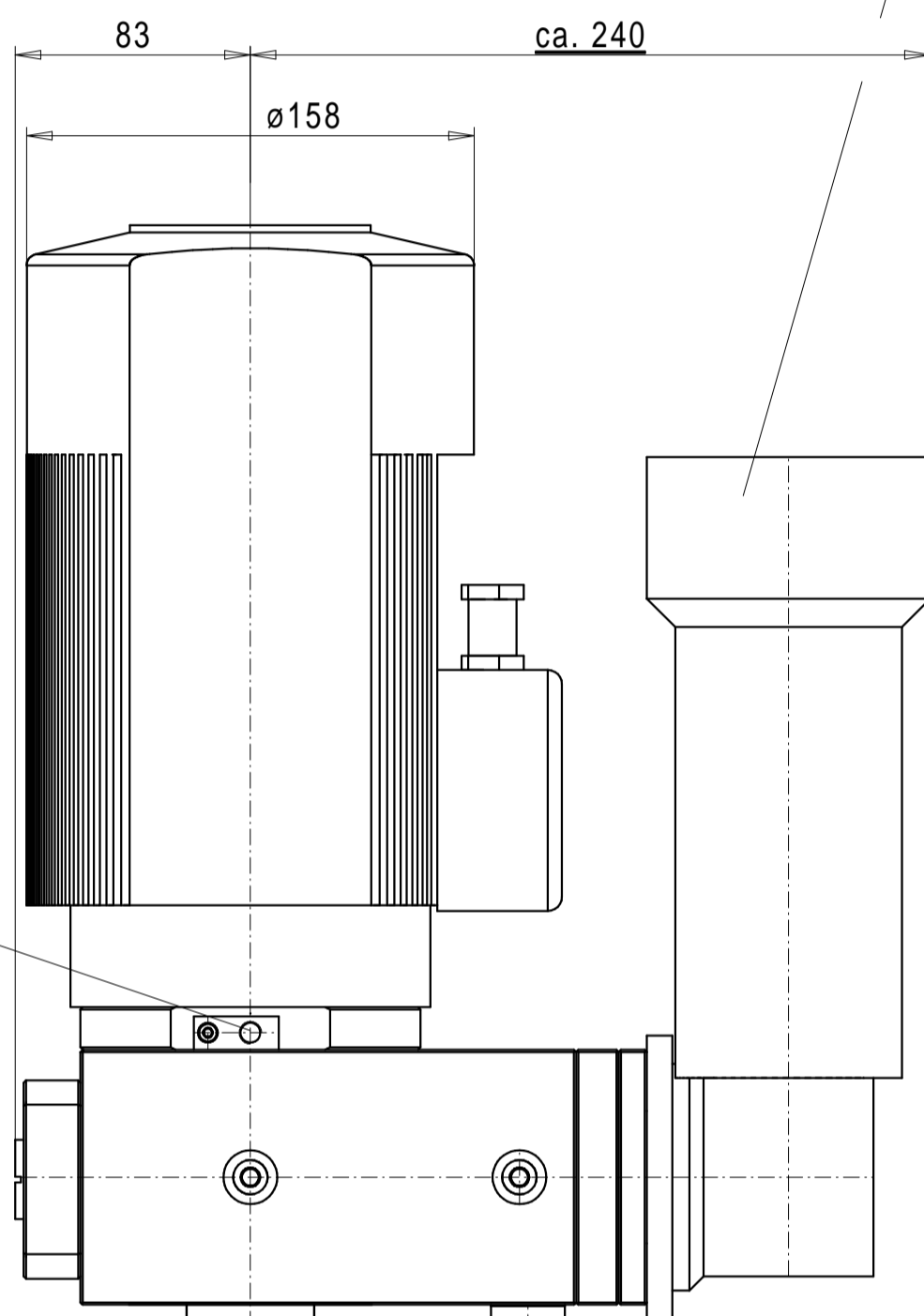


Execution	A	B	C	Weight	
				80 mm stroke	100 mm stroke
1,70 kW	259	-	-	29,50 kg	33,50 kg
2,20 kW	276	-	-	35,50 kg	39,50 kg
80 stroke	-	491,5	206,5		
100 stroke	-	531,5	226,5		

Servomotor: MCKB 320 PT2 - B5/S  
 manufacturer: minimotor  
 output: 74W  
 motor voltage: 230/400V/50Hz  
 277/480V/60Hz  
 speed: 2800 1/min  
 gear ratio: 20:1  
 output speed: 140 1/min  
 brake: 24V



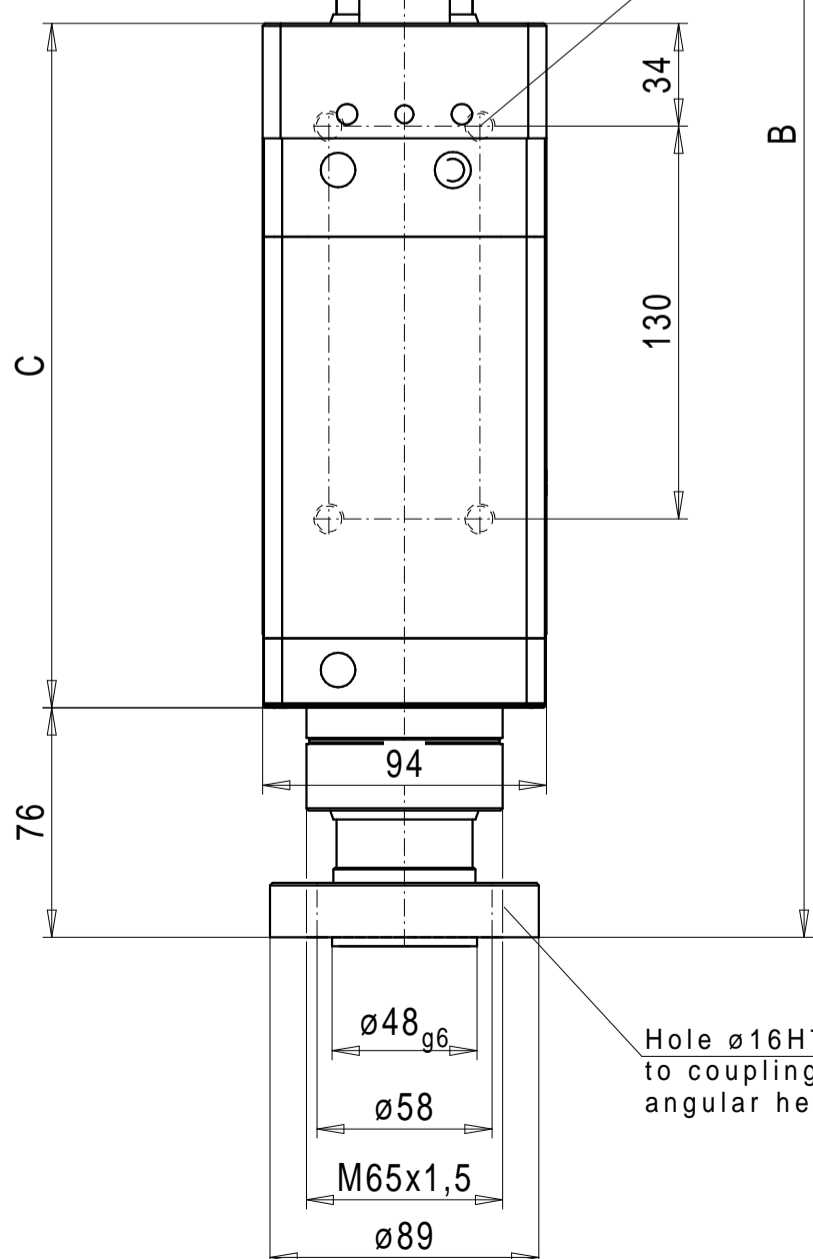
Holder with M8x1 at proximity switch XS508B1PAL2 (option) to point of reference



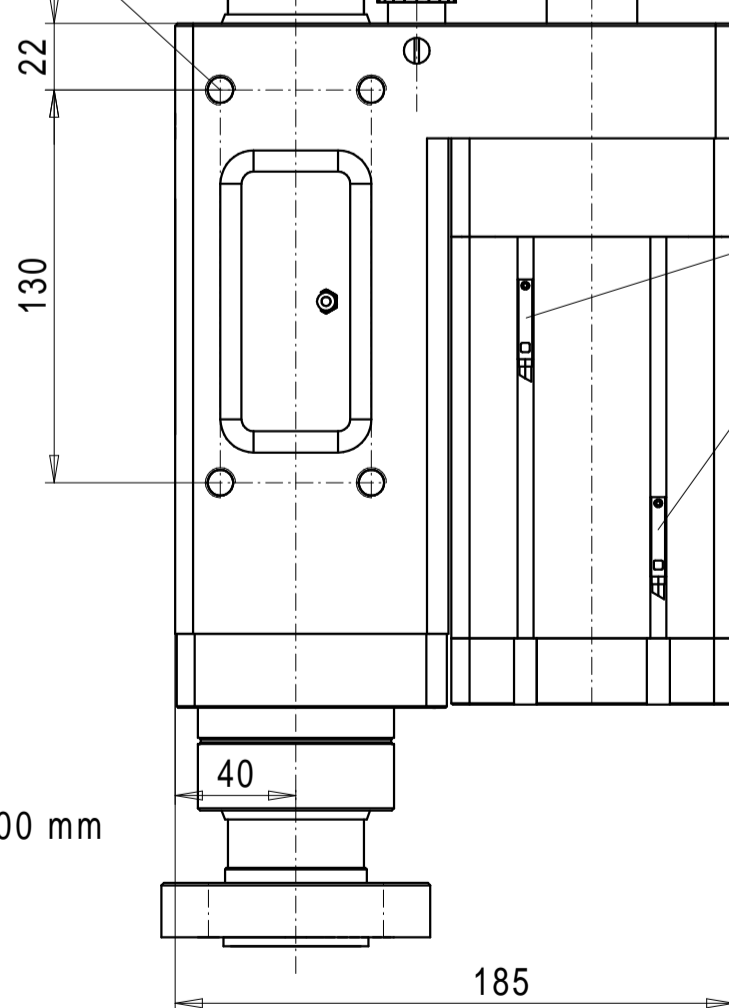
Mounting holes M10/15 deep on 3 sides of the housing

Stop screw with scale

adjustable area



Hole  $\varnothing 16H7 / \varnothing 11H7$  to coupling with angular heads, gear units, etc.



Proximity switches (2x) FESTO SME-8-K5-LED-24 for position sensing of piston (option)

Stroke 75 or 100 mm



Push tube / spindle drive swiveled  $0^\circ - 360^\circ$   
 $360^\circ - 0^\circ$