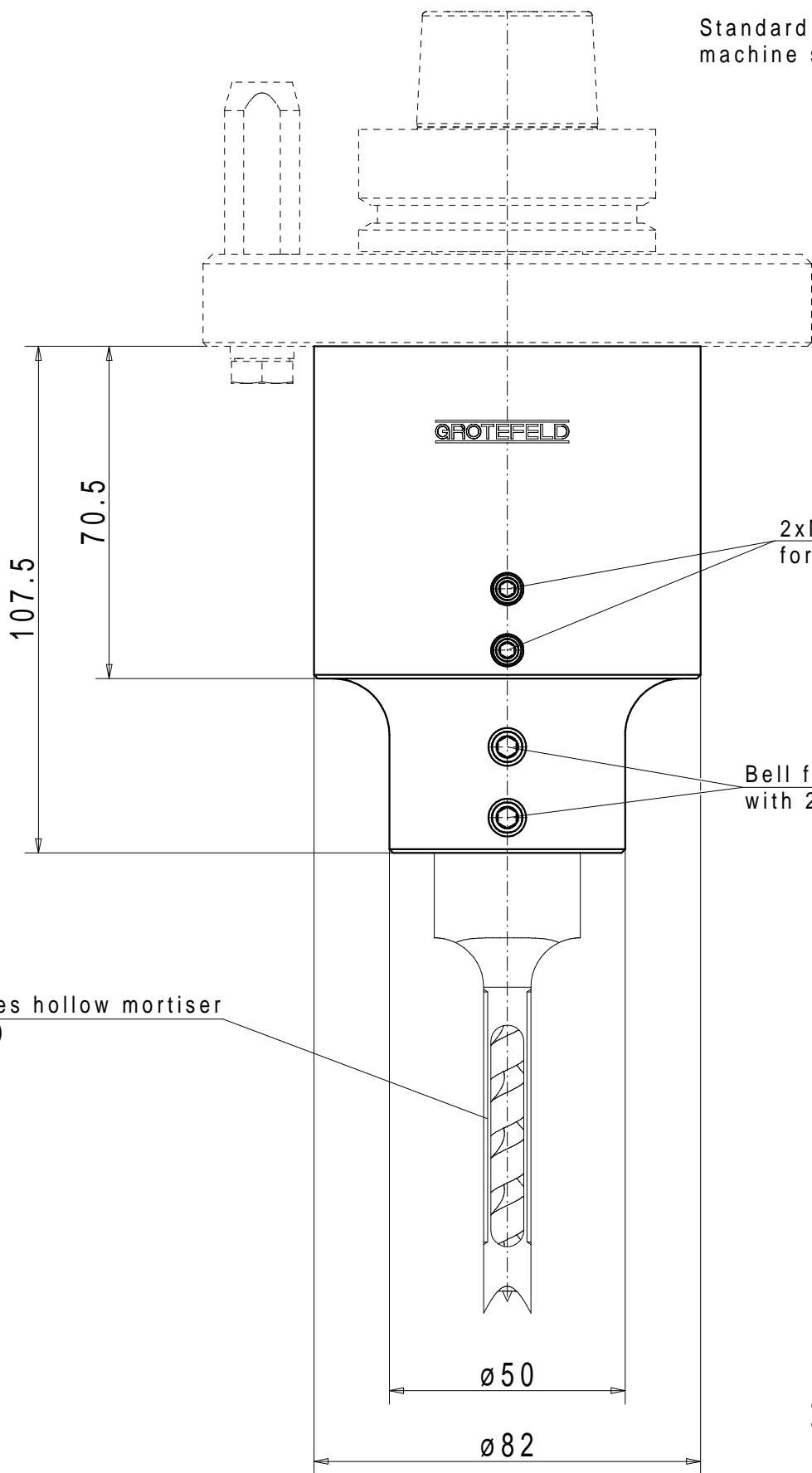


Drive adapter

Standard configurations and machine specific executions upon request

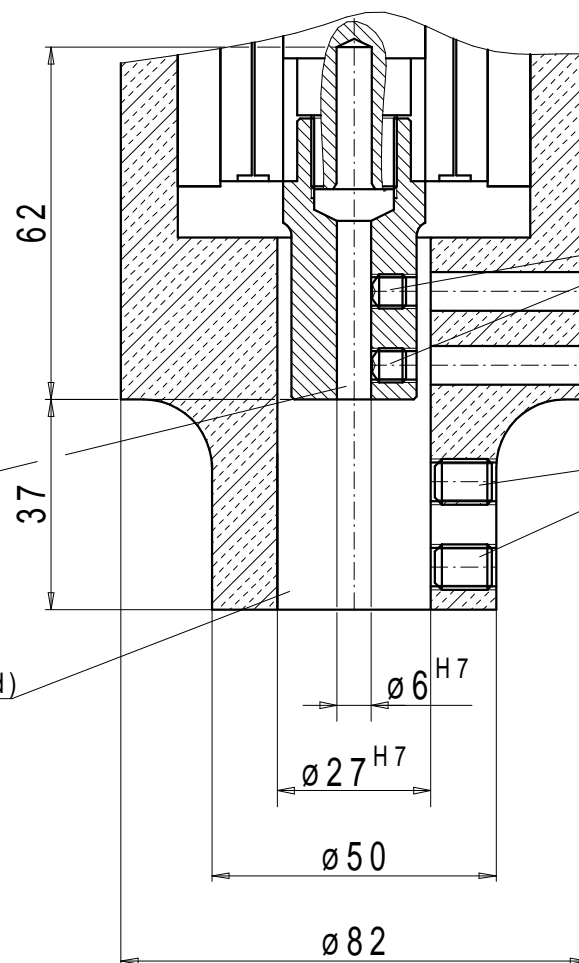


2xM6 Binding screw DIN 916 for clamping tool 1

Bell for a square needle, fixed with 2xM8 Binding screw DIN 913

Machines hollow mortiser (option)

Tool receptacle



2xM6 Binding screw DIN 916 for tool 1

2xM8 Binding screw DIN 913 for tool 2

Inclusion for drills (rotary)
Tool 1

Inclusion for square needle (solid)
Tool 2